

D4



Designed for the smallest of work spaces



Clamshell design, easy loading

The D4 series features a user-friendly clamshell design that allows users to simply open the cover and loading media.



Compact size

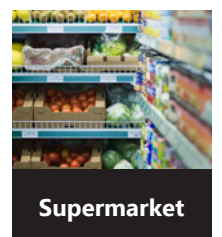
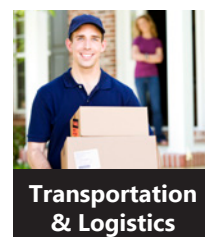
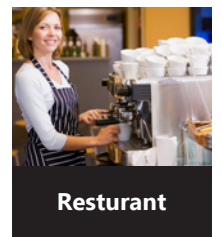
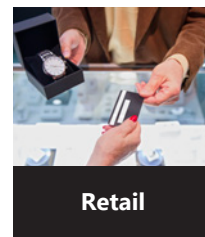
Small footprint design, the compact D4 series fits into tight spaces and supports a wide range of applications.



Enhanced connectivity

The D4 series has built-in Ethernet, USB host, USB device, RS-232 and it can be expanded with Wi-Fi, Bluetooth.

Applications



General Specifications

Print Specifications	D4-250	D4-350
Print Method	Direct Thermal	
Print Resolution	203 dpi (8 dots/mm)	300 dpi (12 dots/mm)
Print Speed (Max.)	6 ips	4 ips
Print Length (Max.)	100"(2540 mm)	50"(1270 mm)
Print Width (Max.)	4.25"(108 mm)	4.16"(105.7 mm)
Onboard Memory	32 MB SDRAM, 16MB Flash ROM (USB storage up to 32GB)	
CPU Type	32 bit RISC microprocessor	

Consumables Specifications

Sensors	Media Transmissive sensor x 1 (fixed, 6.27mm offset) / Media Reflective sensor x 1 (movable) & Head open switch
Media Type	Roll-feed, die-cut, continuous, fan-fold, black mark, tags, ticket or plain paper label
Media	Max. width: 4.65" (118mm). Min. width: 0.88" (22.4mm). Thickness: 0.0024"~0.0075" (0.06mm~0.19mm) 5"(127mm) OD on a 1"/1.5" (25.4/38 mm) ID core; Dealer Option external media stand 8" OD on 1"/3" ID Core

Fonts & Symbologies

Fonts	Internal character sets standard support. Soft fonts are downloadable
1D code	UPC-A, UPC-E, JAN/EAN, CODE39, CODE93, CODE128, GS1-128 (UCC/EAN128), CODABAR (NW-7), ITF, Industrial 2of5, MSI, UPC add-on code, POSTNET, GS1 DataBar Omnidirectional, GS1 DataBar Truncated, GS1 DataBar Stacked, GS1 DataBar Stacked Omnidirectional, GS1 DataBar Limited, GS1 DataBar Expanded, GS1 DataBar Expanded Stacked
2D code	QR Code, PDF417 (including MicroPDF), DataMatrix (ECC200), GS1 DataMatrix, MaxiCode
Composite Symbol	EAN-13 Composite (CC-A/CC-B), EAN-8 Composite (CC-A/CC-B), UPC-A Composite (CC-A/CC-B), UPC-E Composite (CC-A/CC-B), GS1 DataBar Composite (CC-A/CC-B), GS1 DataBar Truncated Composite (CC-A/CC-B), GS1 DataBar Stacked Composite (CC-A/CC-B), GS1 DataBar Expanded Stacked Composite (CC-A/CC-B), GS1 DataBar Expanded Composite (CC-A/CC-B), GS1 DataBar Stacked Omnidirectional Composite (CC-A/CC-B), GS1 DataBar Limited Composite (CC-A/CC-B), GS1-128 Composite (CC-A/CC-B/CC-C)

Interface Characteristics and Integration

Operation Interface	Standard: Button x 1, Dual LED indicators (with 3 LED colors)
Communication Interface	Standard: Ethernet, USB host, USB device, RS-232 Dealer Option: Wi-Fi (IEEE 802.11 b/g/n), Bluetooth
Programming Language	Standard: PPLA+PPLB+PPLZ
Graphics	<u>PPLA</u> : PCX, BMP, IMG, HEX, GDI <u>PPLB</u> : PCX, BMP, Binary raster, GDI <u>PPLZ</u> : GRF, Hex, GDI
Software-Label Editing	Windows Driver (Windows XP/Vista/Win7/Win8/Win10), BarTender® from Seagull Scientific
Software-Utility	Printer Tool
Optional Accessory	Full Cutter, Partial Cutter, Peeler, External media stand

Operating & Environment Characteristics

Power Source	Universal Switching Power supply. AC input voltage: 100~240V, 50~60Hz. DC Output: 24V, 2.4A
Operation Environment	Operating: 41°F~104°F (5°C~40°C). Storage: -4°F~140°F (-20°C~60°C) Operating: 25 %RH ~ 85 %RH (non-condensing). Storage: 10 %RH ~ 90 %RH(non-condensing)
Agency Listing	CE, UL/cULus, FCC

Physical Characteristics

Dimensions	W 183 mm x H 225.9 mm x D 166 mm
Weight	3.83 lbs (1.74 kg)

*This data sheet is for informational purpose only. Argox makes no warranties, expressed or implied in this summary. Specifications are subject to change without notice. All trade marks are the property of their respective owners. For more specific information, please refer to owner's manual.



Argox Information Co., Ltd.

7F., No.126, Ln.235, Baoqiao Rd., Xindian Dist., New Taipei City 231, Taiwan (R.O.C.)
Tel: +886-2-8912-1121 Fax: +886-2-8912-1124 <http://www.argo.com> <https://www.youtube.com/user/argoxmt>
Copyright © 2017. Argox Information Co., Ltd. All Rights Reserved.